

**THE GLOBALIZATION AND  
COMMUNITY HEALTH FIELD SCHOOL:  
STUDENT CONTRIBUTIONS TO  
COMMUNITY WELL-BEING**

**Nancy Romero-Daza**

**David Himmelgreen**

**Department of Anthropology**

**University of South Florida**

# **Globalization and Community Health Field School (GCHFS)**

- Intensive, five week methods training
- Goal: familiarize students with qualitative and quantitative methods used to examine the impact of globalization on the health of local communities

# Partners (Since 2001)

- University of South Florida
- MVI
- School of Public Health, UCR
- Government and non-government health agencies
- Local communities

# Participating Students

- More than 150 graduate and undergraduate students
- Anthropology, public health, nursing, pre-med, interdisciplinary social sciences, etc.
- US, Mexico, Costa Rica, Spain



# 2011 Cohort



# Week One

## Introduction to Costa Rican Health Care System

- Hospital/clinic visits
- MOH informal lectures
- Visits to SPH field sites
- Meetings with agencies



# Week Two

## Qualitative methods

- Participant Observation
- Informal Interviews
- Formal Interviews
- Focus groups

# Other Activities

- Observation of traditional healer's work
- Meeting with community advisors
- Workshop on ethics



# Week Three

## Quantitative Methods

- Epidemiology
- Anthropometry and Nutritional Assessment
- Clinical Assessment



# Community Health Assessment

- Day-long activity
- Open to families and individuals
- Nutritional/health assessment
- Health education
- Medical check up  
Costa Rican MDs



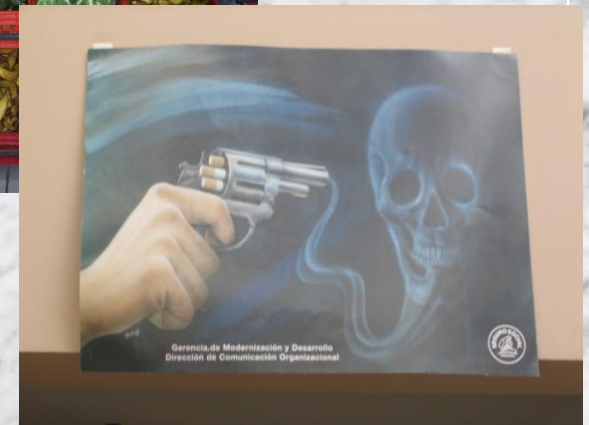




# WEEKS 4 AND 5

## RESEARCH PROJECTS

- HIV/AIDS , HPV
- Nutrition and Physical activity
- Reproductive health
- Youth issues (smoking, recreation)
- Migrant worker health
- Occupational health
- Water quality
- Menopause



**How do our students contribute  
to community well-being?**

# Contributing to Knowledge Base and Research Methods

- Exploratory studies in response to community needs
- Presentation of results to community and “scientific” audiences
- Dissemination through digital library (USF, University of Vermont, Syracuse U, CUNY)
- Direct feedback to clinic, MVI, others

# Translating Research into Application

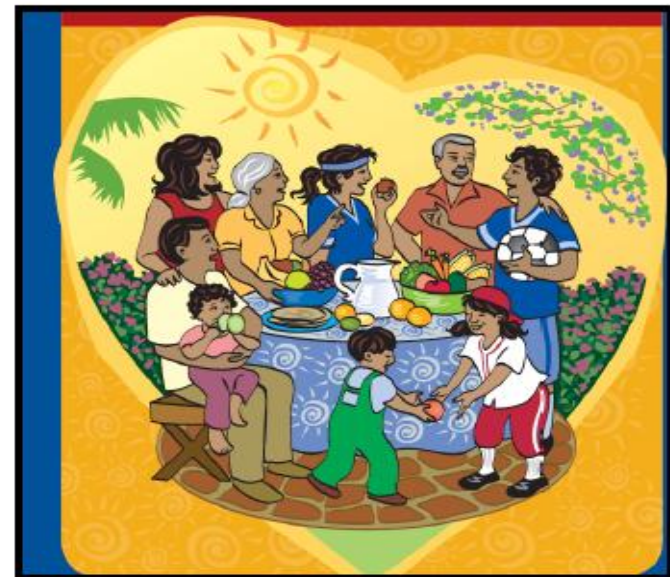
Involving community members in:

- Identification of “solutions”
- Creation of education/awareness materials
- Planning for follow-up

# Nutrition & Health Calendar

- Educational output
- Disease awareness
  - Heart health
- Portion size
  - Balanced plate
  - Increase of F/V
- Recipes

**Comer Bien Estar Bien!**



**Calendario de Nutricion Y Salud**

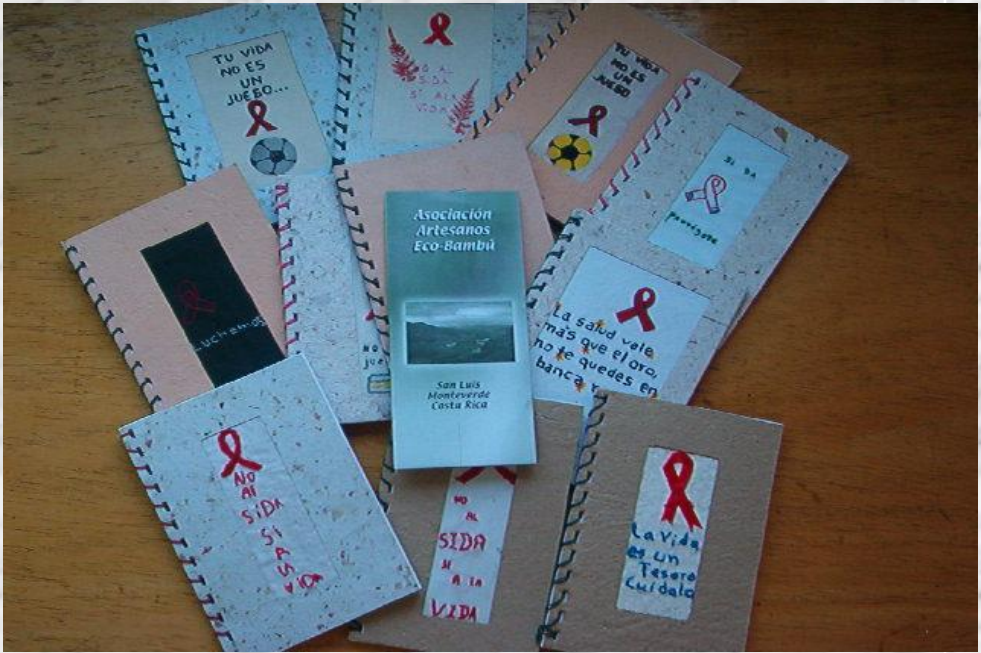
# ¿Qué es la menopausia?

Un librito sobre menopausia



# HIV/AIDS





# Informing New Research

- 3 year NSF longitudinal project
- Impact of changing economy on food security
- 200 households
- Nutritional assessment, bio-markers (BMI, blood pressure)

# NSF Future Steps

- Key Hole garden demonstration project
- Nutrition education initiatives targeted at youth and families
- Physical activity initiatives



# Are they tourists?



# Or “short-term residents”?





# **Socially Responsible Education**

- Working WITH communities as PARTNERS
- Learning and respecting cultural norms
- Upholding research ethics
- Contributing to sustainability